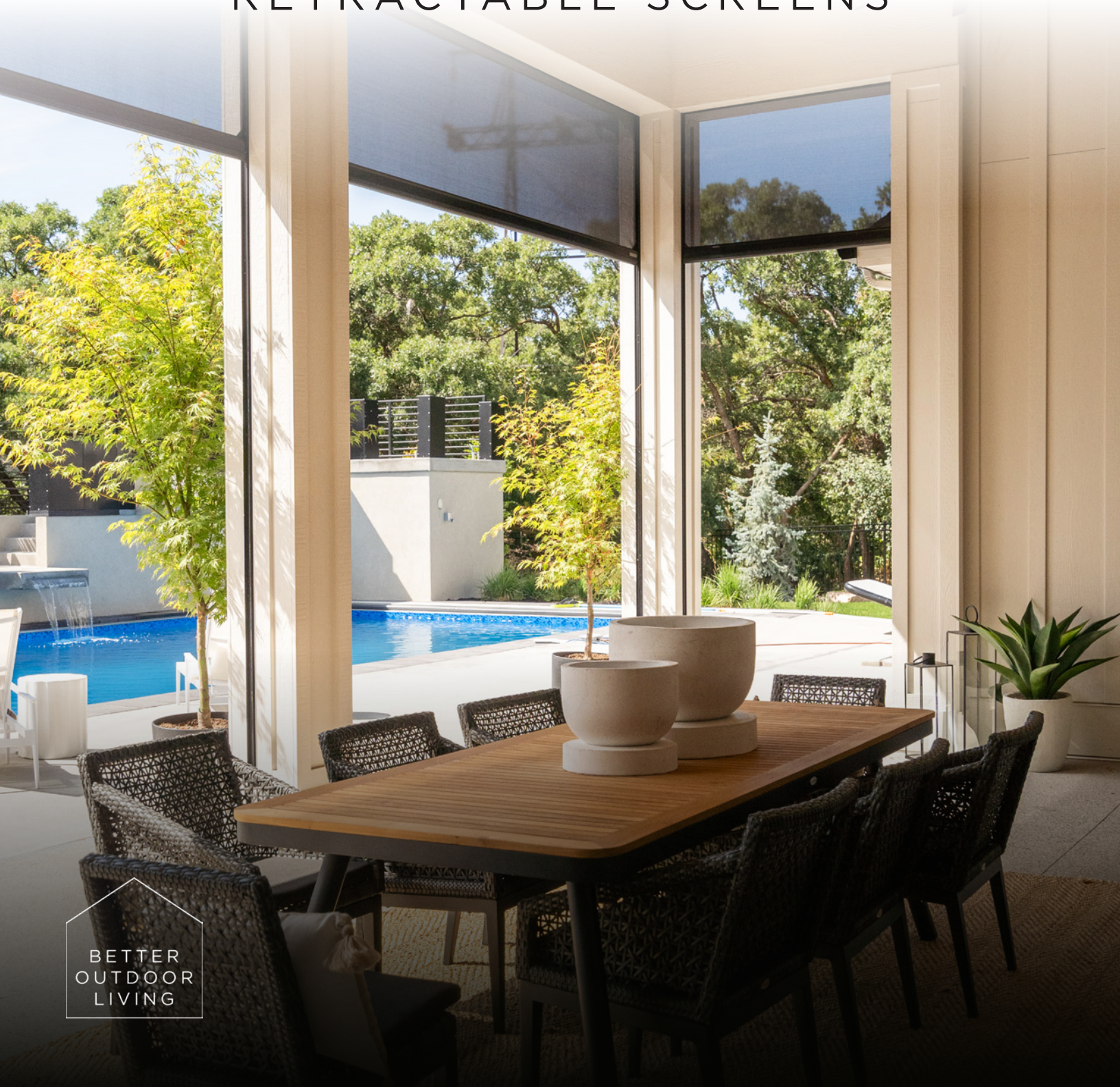




# SUNCOAST

## RETRACTABLE SCREENS



BETTER  
OUTDOOR  
LIVING





Creating exceptional residential enclosures for any application



## | TABLE OF CONTENTS

04 ABOUT US

06 PRODUCT: RETRACTABLE SCREEN/VINYL

18 ACCESSORIES

20 MANUFACTURING

21 POWDER COATING

23 THE TEAM



## | ABOUT US

### Pushing the boundaries in luxury outdoor living

Suncoast is a premier manufacturer, supplier and builder of luxury outdoor enclosures. With over 30 years of experience building in the harshest Canadian environments, you can count on dependable quality for your next deck, patio, enclosure or project.

#### MANUFACTURING

Suncoast takes control of the manufacturing process to ensure the highest quality product tailored perfectly to your custom application. From cutting and coating to kitting and shipping, the Suncoast team ensures the reliable delivery of a structure built to last for many years.

#### PRODUCT DEVELOPMENT

We strive to be at the leading edge of the industry with respect to technology and style. That's why our product development team is continuously sourcing new profiles, parts and smart options to engineer functional and beautiful products.









## | RETRACTABLE SCREENS/VINYL

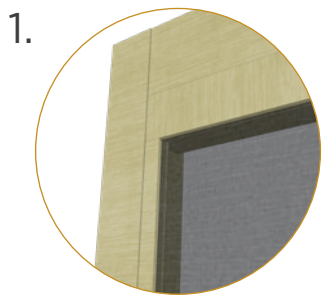
Enjoy a fully enclosed patio with the touch of a button. Or keep it open and enjoy the breeze

Don't worry about the weather. No need to send your guests away if the rain comes. Simply lower the Retractable Vinyl Screens and enjoy a warm, dry, enclosed space.



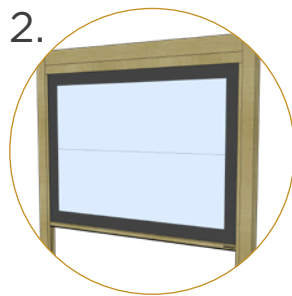
WIND PROTECTION  
SOLAR SHADE  
BUG FREE  
PRIVACY  
CLIMATE CONTROL





1. Seamless Integration

- Flush to frame roller housing and track.
- 5.5" and 7" Housing have round and square housing options.



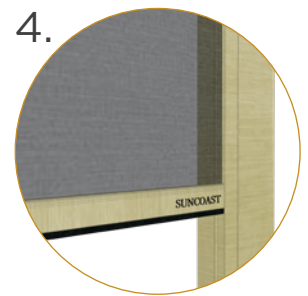
2. Mesh and Vinyl

- Full Vinyl, Windowed and Boardered.



3. Custom Openings

- Build into existing frames such as timber frames and stone columns.
- Mesh options 60-95% density.

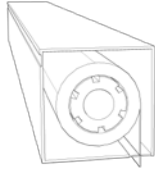


4. Sealed Bottom

- Weather-sealed bottom bar in either rubber gasket or bristle brush.
- Bottom bar sloped to match surface gradient.
- Obstruction sensing motor.

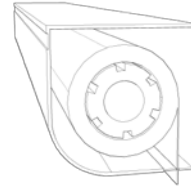


# Housing Sizes and Spans



## 5.5" Square Housing

For spans up to 22ft and drops up to 11ft.

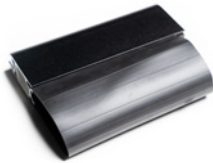


## 7" Round Housing

For spans up to 30ft and drops up to 20ft.

## Weighted bottom bar weather seal options:

- 3" rubber gasket
- 2" rubber gasket
- nylon brush



Surface mounted tracks fixed to Suncoast aluminum frames, existing posts and a large variety of exterior siding.



Cable guided track system for frameless applications.



Recessed tracks for screens fixed to stone, brick or other deep materials.

Mesh and vinyl screens are rated for winds up to 100KM/H or 65MPH and can also be fitted with intelligent options to retract automatically in higher winds.



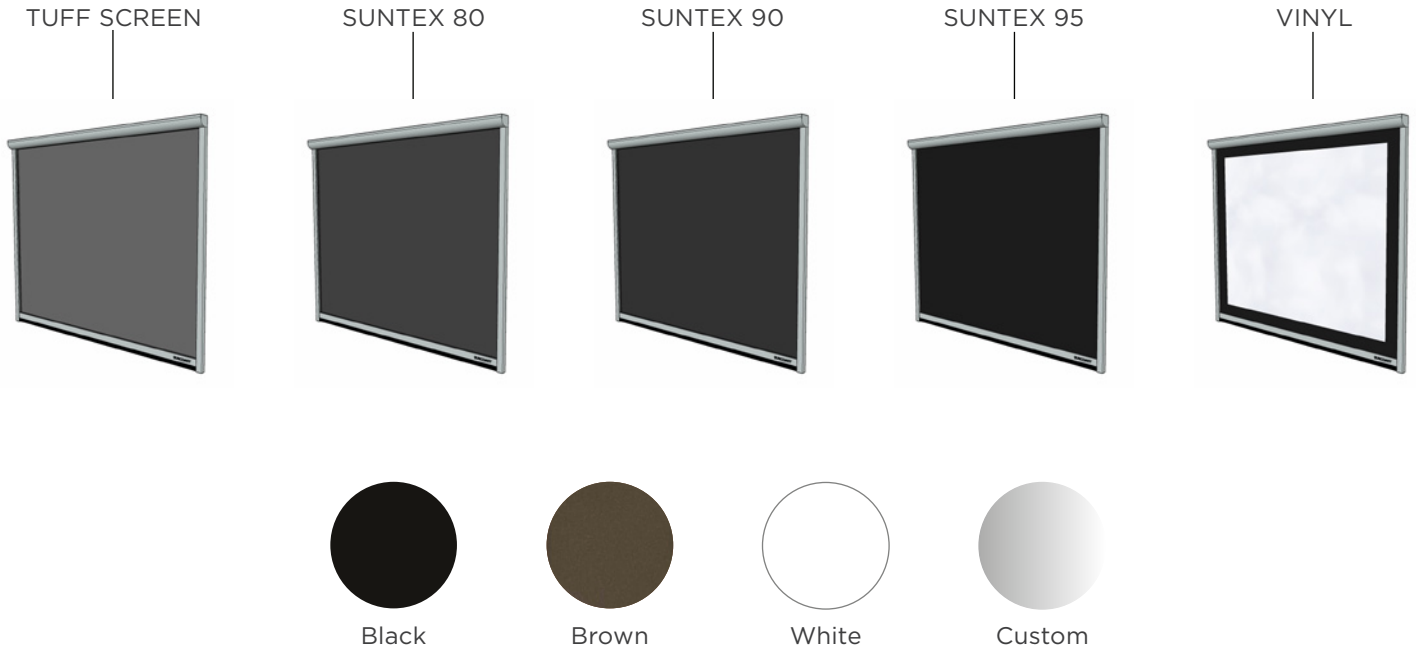
# Aluminum Colour Options and Screen Densities

Screen density selection is largely utility driven. Bug protection requires a low density mesh while a higher density would be more appropriate for wind deflection. Privacy may also be a considering factor in selection. In addition to mesh, our vinyl screens are an excellent option for residential applications where 3-Season operation is the target.



Suncoast uses mesh made in the USA by Phifer, an industry leader in screens and outdoor fabrics. The vinyl coated fiberglass mesh is anti-mold/mildew and UV resistant.

## RETRACTABLE POWER SCREEN CONFIGURATIONS



We are pleased to offer our Industry-Leading Limited Lifetime Warranty. For more information please visit our website at [suncoastenclosures.com](http://suncoastenclosures.com)





## | RETRACTABLE SCREENS/VINYL

Where innovation and technology meet. Our passion to push the boundaries allows us to create the best product possible for our clients and their homes

### BLOCK OUT THE ELEMENTS

Retractable screens provide your area with protection from whatever your environment requires. Sun, wind, bugs, rain and snow are no match for a custom fit screen. Fine-tune the level of wind and weather blocking with selectable mesh densities ranging 60-95% along with additional vinyl options.

### INTEGRATED FRAMING

Tracks for retractable screens can be fixed to just about any surface including wood or timber framing, stone columns, stucco and wood or vinyl siding. This allows a screen to be placed in your existing space without excessive new metal framing. Transform your already covered deck into a fully enclosed and protected oasis!



## SMART OPERATION

Like louvered roofs, our screens are controlled through a remote control or the app. Everything is in one place for total convenience. Additional smart features on retractable screens include obstruction sensing, automatic high wind retracting and a high speed egress option.

## UP TO 30 FT SCREEN WIDTH

Our 7-inch housing model can accommodate up to 30 ft wide openings. It can also be used when a 22 ft drop is required. Our 5.5-inch housing model can have a screen span of up to 22 ft wide with an 11 ft drop.



| RETRACTABLE SCREENS/VINYL

Some highlights of work we've done for forward-thinking clients















RETRACTABLE SCREENS









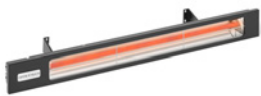
RETRACTABLE SCREENS





# | ACCESSORIES

Complete your build with some of our integrated accessories



## Heaters

With a variety of options from quality manufactures such as Infratech and Bromic you are able to choose the correct heater to suit your style and needs. Choose from power outputs ranging 1400-6000W.

Heaters are available in 120V and 240v options. Additional products are available from Infratech and Bromic.



## Lighting

Suncoast louvers are designed with a light track integrated into the gutter system for LED rope lights to create an ambient feel.

Pot lights, pendants, mounted fixtures or other third-party lights can also be added.



## Sensors

Rain and wind sensors can be built into the control system of the louvered roofs and retractables. Open and close functions are automated to perform even when you are not around to close everything up in high winds or rain.

Rain and wind sensors can be built in to automate your louver and retractables system. Close the blades and lower the screens as soon as the first few drops land.

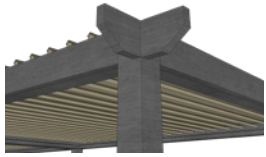


## Fans

Not every installation location needs a heater. In many locations, fans are added to keep things cool!

For warmer climates, our framing and accessory beams are designed to handle fan mounting.





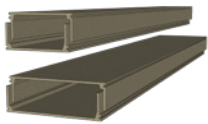
## Architectural Ends

Add architectural ends in either a classic or modern style.



## Cornice Add-on

Cornices add an extra element of architectural intricacy for a bold look.



## Accessory Beam

Accessory beams are installed for locations where add-ons are desired but a mounting location is needed. Wiring for accessories can be run inside the beam.



## Smart Home Automation

Suncoast products are designed to be compatible with smart home and automation systems. Use the app to control you screens and louvers from anywhere or take advantage of voice activation through Google or Alexa.



## RollApp Hub

This hub gives you the ability to download the Rollapp and control your louvered roof or retractable screens from your phone.



## LinkIT

This hub is used to integrate your louvered roof or screens to an existing home automation system.



## Dry Contact

This hub is also used to integrate your louvered roof or screens to an existing home automation system.



# Manufacturing

Every single Suncoast retractable is fully custom built to the dimensions of your opening. Careful on-site measurements are taken to the manufacturing facility to build the exact width and drop that will be needed. We will even account for the slope of the floor surface so that the bottom bar contacts across the entire width. Our state of the art CNC machinery and RF welding equipment allow for the industries most precise and high quality manufacturing.





# In House Powder Coating Process

Suncoast now ensures the quality and color availability of our coatings by controlling this process in house with a state of the art powder coating line. Using premier powder coating materials and a highly regulated application procedure, we provide our customers with the best finish available in terms of consistency, durability, and resistance to the elements. Our powder coating standards exceed most area requirements and meet even the most demanding ones with a AAMA 2604 rating.







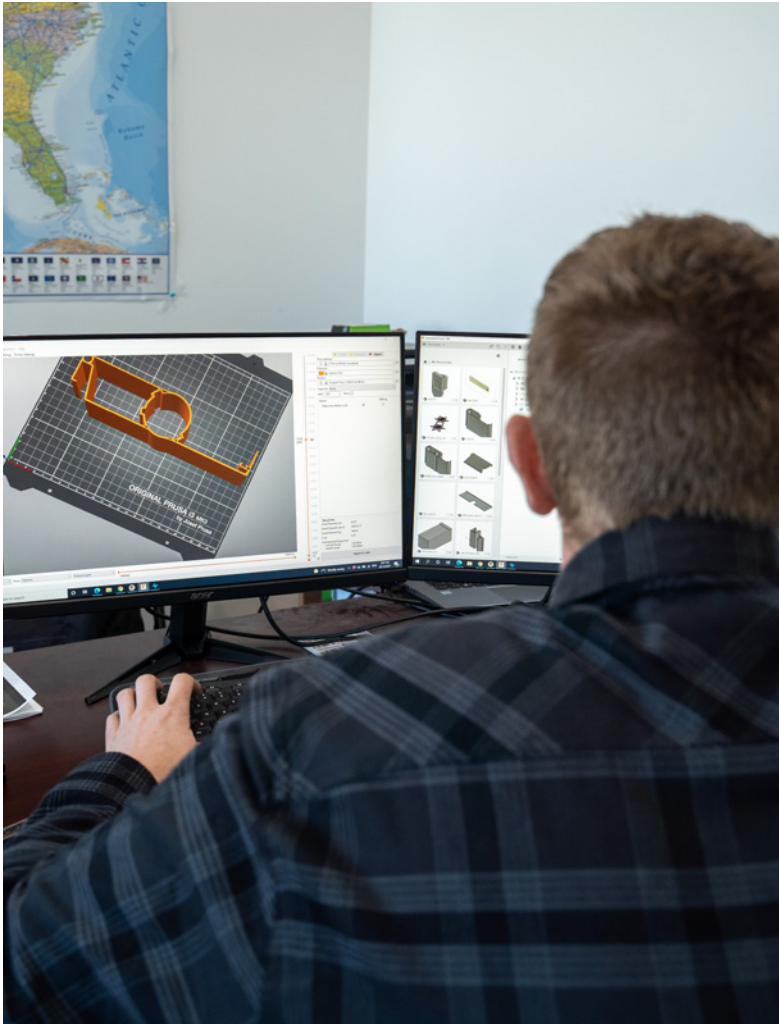
## | THE TEAM

The people who make everything happen.

Our manufacturing team is the best in the industry because of their commitment to quality, efficiency, and customer satisfaction. With years of experience and a passion for innovation, they consistently produce products that meet the highest standards of excellence. Their advanced technology and attention to detail ensure that every product is manufactured to exact spec-

ifications and delivered on time. Furthermore, they maintain a strong culture of continuous improvement, regularly evaluating and updating their processes to stay ahead of the competition. With our manufacturing team at the forefront of the industry, we are able to provide our customers with exceptional products and service.









SUNCOAST

+1 877 449 5106 | [suncoastenclosures.com](http://suncoastenclosures.com)